



**OPTIMA**  
3-in-1 magnifier



## Optima 3-in-1 expands the spectrum

### Optima 3-in-1 features

- ✓ toggle between non-polarized, polarized, and UV lighting modes for faster examinations
- ✓ distortion-free magnification
- ✓ bright, homogeneous lighting
- ✓ suitable for Wood's light exams
- ✓ charging via micro-USB or optional base station



non-polarized light

### Non-polarized light (daylight)

Non-polarized light is characterized by brightness, color fidelity and homogeneity. It is a strong and unadulterated type of illumination that brings light into darkness.

### Polarized light

Polarized light reduces reflections and puts skin irregularities in the background. This allows a better evaluation of colors and contours, even in deeper dermal and epidermal structures.

### Directed light

Directed light, either from the left or from the right side, makes considerably better assessment of skin structures possible, which is why this type of illumination is particularly suitable for raised lesions such as nodules or angiomas.

### UV / Wood's light

With four high-output 365nm UV LEDs, superficial pigment and skin auto-fluorescence can be easily visualized. Suitable for Wood's light exams of bacterial, parasitic, or fungal skin infections.

### The type of lighting is crucial

Natural color reproduction is indispensable for the diagnostic assessment of all changes in skin. Optima supplies precisely mixed light that comes close to the natural spectrum of daylight. The microprocessor-controlled LEDs allow for true-color and consistent illumination as bright as daylight—even with decreasing battery power.

The Optima 3-in-1 offers you three lighting modes in one device. In addition to the normal non-polarized **daylight function**, the device also offers **polarized illumination** for reduced reflections on the skin and **UV lighting. Directed lighting**, which particularly emphasizes the skin's structures and profile, is also available.



polarized light



UV light

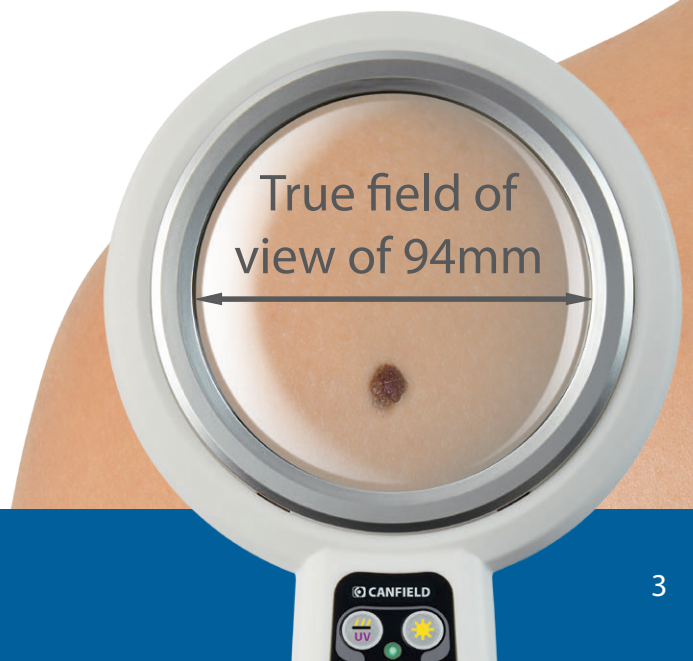
### Model Comparison

	non-polarized light	polarized light	directed light	UV / Wood's light exam
Optima 3-in-1	✓	✓	✓	✓
Optima Daylight	✓	✓	✓	



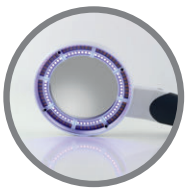
### Optima Daylight model

Optima Daylight offers **non-polarized , polarized** and **directed light** (shown here) for optimum screenings.



True field of view of 94mm

## Advantages at a glance



Several lighting modes in one device



Large lens with distortion-free view



Charging via micro-USB



With protective cover made of robust nylon



Same optional charging station for Optima and Luminis

### CANFIELD Scientific GmbH

Otto-Brenner-Str. 203  
33604 Bielefeld  
Germany

Phone +49 521 329 856 0 [info.europe@canfieldsci.com](mailto:info.europe@canfieldsci.com)  
Fax +49 521 329 856 40 [www.canfieldsci.com](http://www.canfieldsci.com)

Secured quality:  
designed and manufactured in  
accordance with the guidelines of  
ISO 9001/13485 and the German and  
European medicine product law (MPG).

©2019 Canfield Scientific, Inc. All rights reserved.  
The illustrations and descriptions in this information may contain  
partial accessories and special equipment. Changes, which serve  
technical progress, reserved.